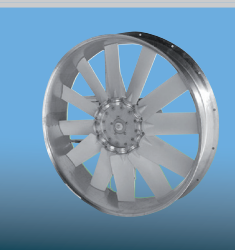
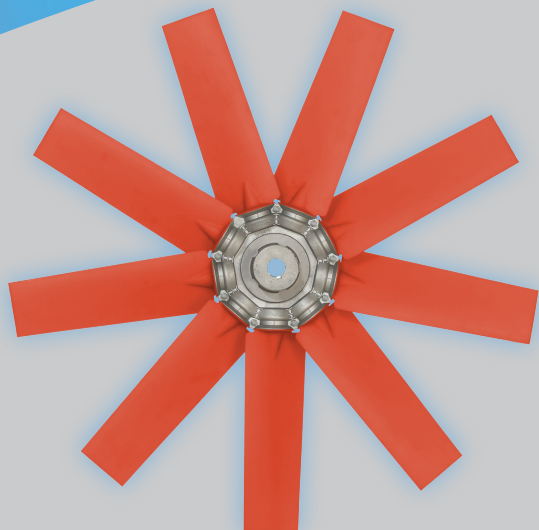




## Variable airfoil profile axial impellers up to Ø 1270 mm

### > Product features

**HasconWing® HV impellers** are manufactured assembling airfoil profile blades made of a variety of materials, with a light aluminum alloy hub. The impellers are thought to be employed in applications that require the highest rotation speeds. The impellers are available in configurations with 5/9/12/16 blades both for clockwise and anti-clockwise rotation. Blades are available in two models: mini (M) and big (B) blades, with right or left setting angles ranging from 20° to 50° and producing a sucking or blowing air flow.



### > Applications

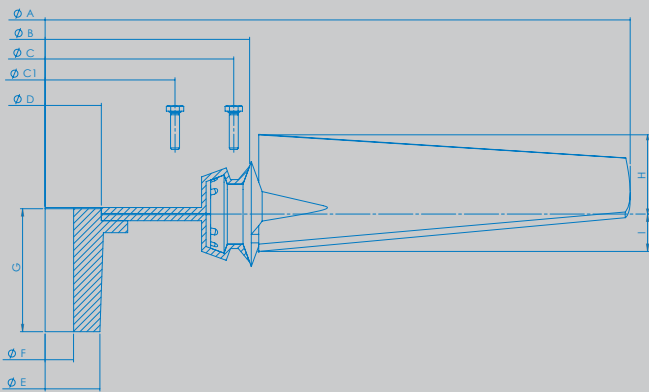
- COMPRESSORS
- VENTILATORS
- GENERATORS
- EARTH MOVING MACHINES
- RADIATORS
- COOLING TOWERS
- SNOW CANNONS
- HOVERCRAFTS

### > Highlights

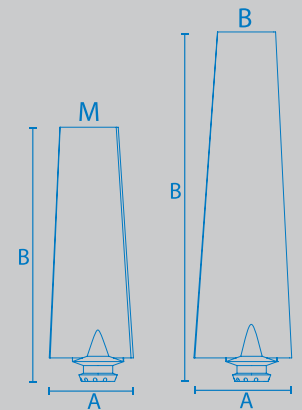
-  free fan selection software is available for download at [www.hwventilation.it](http://www.hwventilation.it)
-  our fans are tested in **AMCA 210/07** wind tunnel and comply with EU Directive 2015
- **LOW NOISE** [emission levels](#) (data available upon request)

## > Specifications

HasconWing® HV impellers are configurable with 5/9/12/16 blades. Blades are available in two versions: mini (M) or big (B) with right or left setting angles ranging from 20° to 50°.



	M	B
A= chords	115	135
B= length	320	450
Max ø impellers	1010	1270



BLADE n°	BLADE Type	max ø A mm	ø B mm	ø C mm	n° holes ø C	ø C1*** mm	n° holes ø C1	ø D mm	ø E mm	ø F mm	G mm
5	M	780	158	139	5 ø 6,5	-	-	55	44 - 52	14 ÷ 34	0-42-62
	B	1040									
9*	M	830	202	184	9 ø 6,5	110	9 ø 6,5	75 - 95	45 - 51 73 - 95	14 ÷ 42	0-42-52 62-82-112
	B	1090									
12*	M	910	280	264	12 ø 6,5	185	12 ø 6,5	75 - 170	45 - 51 73 - 95	14 ÷ 42	0-42-52 62-82-112
	B	1170									
16**	M	1010	375	358	16 ø 6,5	280	16 ø 6,5	75 - 240	45 - 51 73 - 95	14 ÷ 55	0-42-52 62-82-112
	B	1270									

\* nr 5 ø 6,5 holes on ø 90 for interchangeable boss connections

\*\* nr 5 ø 6,5 holes on ø 90 and nr 9 ø 6,5 holes on ø 110 for interchangeable boss connections

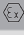


\*\*\* only for medium or total tightening

Blade Type		20°	25°	30°	32.5°	35°	37.5°	40°	45°	50°
M	I	11	15	19	20	22	24	26	29	-
	H	29	35	40	43	45	47	49	52	-
B	I	-	17	22	25	27	29	31	34	38
	H	-	42	48	51	53	56	59	63	67

Tolerance ± 2mm

## > Materials

HasconWing® HV blades are available in different materials to suit a variety of applications which require different temperatures and rotation speeds.

MATERIAL	DESCRIPTION	STD. COLOR*	OP. TEMPERATURE***
PPG	Polypropylene Glass Reinforced (PP 30% glass)	Orange	-20°C to +85°C
PAG	Polyamide Glass Reinforced (PA6)	White	-40°C to +120°C
RYT	Ryton	Brown	-50°C to +200°C
PAA** 	Antistatic Polyamide	Black	-40°C to +120°C
PAX** 	Antistatic, Self extinguishing PA	Black	-40°C to +120°C
PAM** 	Antistatic, Self extinguishing, Magnetically shielded PA	Black	-40°C to +120°C

\*Custom colors available upon request \*\*ATEX materials for hazardous environments \*\*\*Contact technical dpt. for customized advise